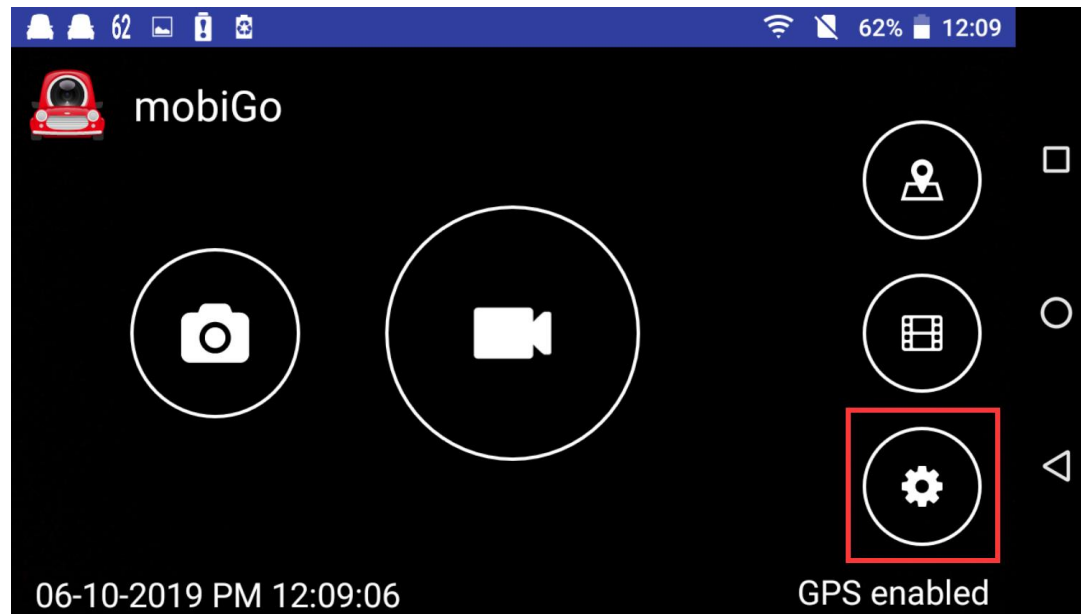
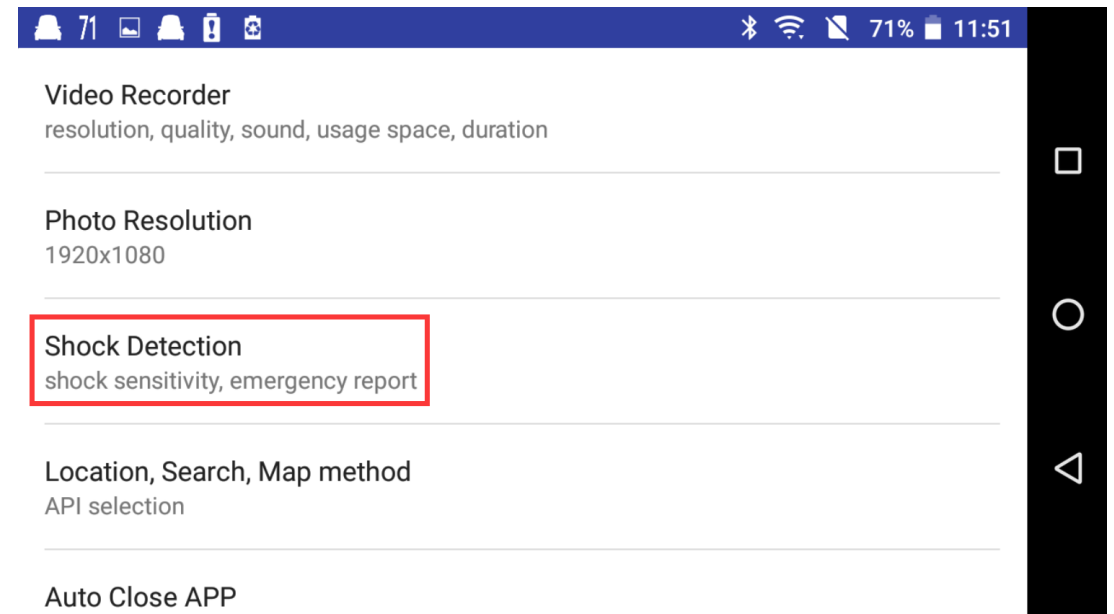


Automatic emergency notification- Emergency message settings

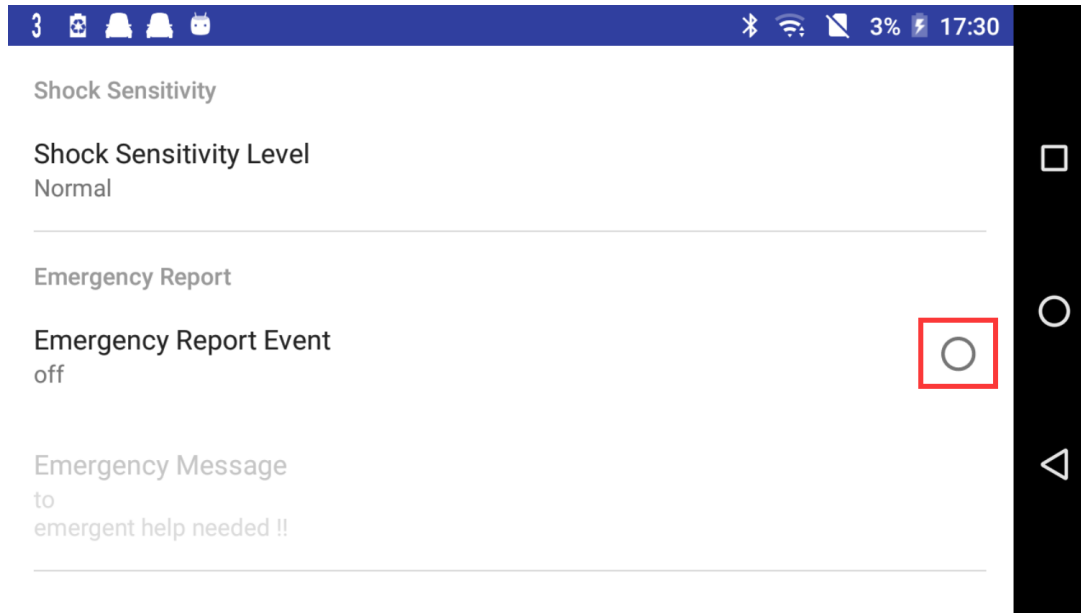
Step1 : Select user settings.



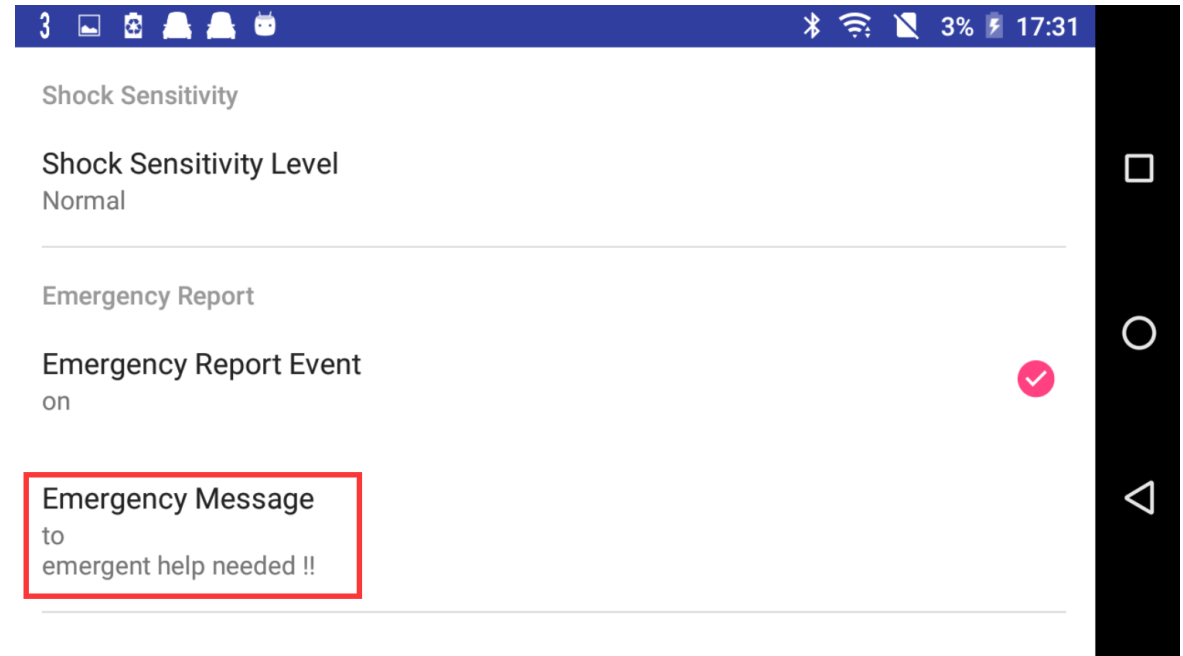
Step2: Select shock detection.



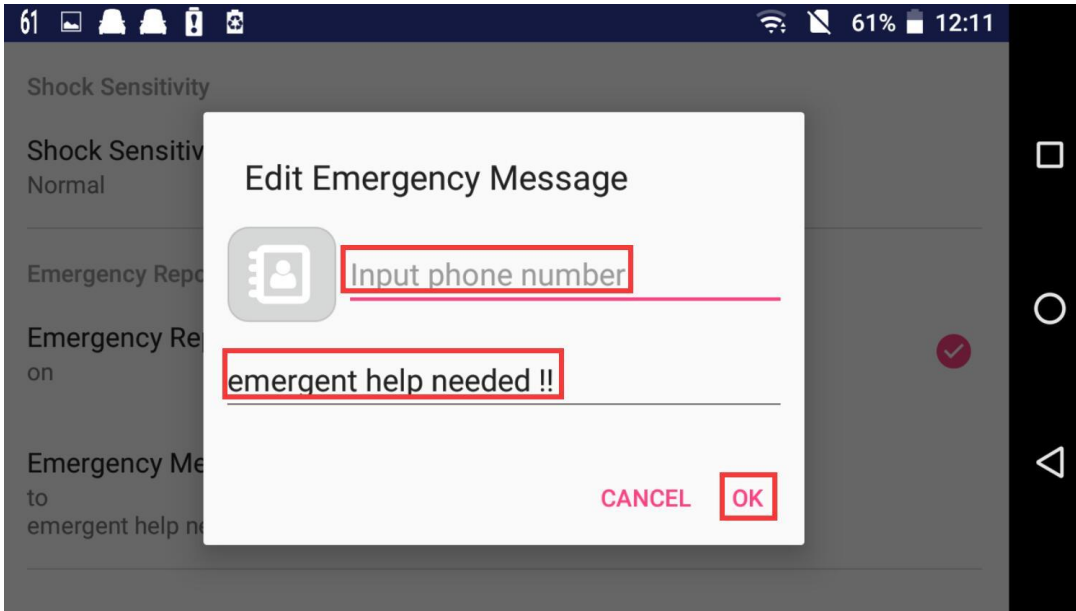
Step3 : Turn on emergency report event.



Step4 : Select emergency message.



Step5 : Enter the emergency contact phone number and edit the send message content.



Step6 : Emergency message recipient's message screen and provide location GPS coordinates.

